

# Venue Tech Specs



## **Wapentake Venue Spec + Loading 2026**

Wapentake, 92 Kirkgate, Leeds LS2 7DJ

[www.wapentakeleeds.co.uk](http://www.wapentakeleeds.co.uk)

### **PERSONNEL**

Tech Manager:	Elliot Nichols	07950631287
Bookings & General Manager:	Will Venn	07887386195
General enquiries:	Millie German	07952930040

### **VENUE INFO**

**Parking:** There is no parking for the venue or immediately outside, but there is parking behind the venue which is £2.50 an hour and there is a multi storey carpark around the corner which is £2.50 an hour. It is also a 2 minute walk from the city bus station for those who are travelling.

**Stage:** There is a raised platform area at the back of the bar which has room for a full band and equipment. They hosted Live at Leeds artists last year.

**Power:** 4x twin 13A sockets behind the stage. More around the venue.

**Backstage:** Downstairs available for equipment and bands

**Capacity:** Staff + performers + guests must not exceed **60**.  
Open event, not ticketed.

**Facilities:** Food until 4pm. Free Wifi available throughout. Password: rdhctrXX

**Backline:** Mics, mic stands, PA and mixing console

**Curfew:** Live music curfew is 10.30pm every day. Bar closes at 12am everyday.

**Age limit:** ***Anyone buying alcohol must be over 18 with proof of ID***

### **Venue tech spec:**

#### **EQH:**

- 4 channel mixing console
- 6 XLRs
- X3 Extension cables
- 2x PA and stands

#### **Band Tech Provided:**

- Boss Katana 100W guitar amp
- Blackstar HT Club 40 Combo MKIII guitar amp
- Fender Rumble 100 bass amp
- X2 SM58
- X2 Mic Stands
- Drum kit

# Artists Tech Specs

## Elwell Tech Spec

### Line-up

- Drums
- Bass
- Guitar
- Guitar
- X2 Vocals

### Bringing

- Drum breakables
- Bass guitar
- 2 guitars
- Cables

### Need

- Drum kit (with 3 cymbal stands)
- Bass guitar amp
- X2 Guitar amp
- 2 mics
- 2 mic stands

## Pharmacie Tech Spec

### Line-up

- Drums
- Bass
- Guitar
- Guitar
- X2 Vocals

### Bringing

- Drum breakables
- Bass guitar
- 2 guitars
- Cables

### Need

- Drum kit (with 3 cymbal stands)
- Bass guitar amp
- X2 Guitar amps
- 2 mics
- 2 mic stands

## My son the monk Tech Spec

### Line-up

- Drums
- Bass
- Guitar
- X2 Vocals

- Bringing
- Drum breakables
- Bass guitar
- 1 guitar
- Cables
  
- Need
- Drum kit (with 3 cymbal stands)
- Bass guitar amp
- X1 Guitar amps
- 2 mics
- 2 mic stands

### **Moon and boy Tech Spec**

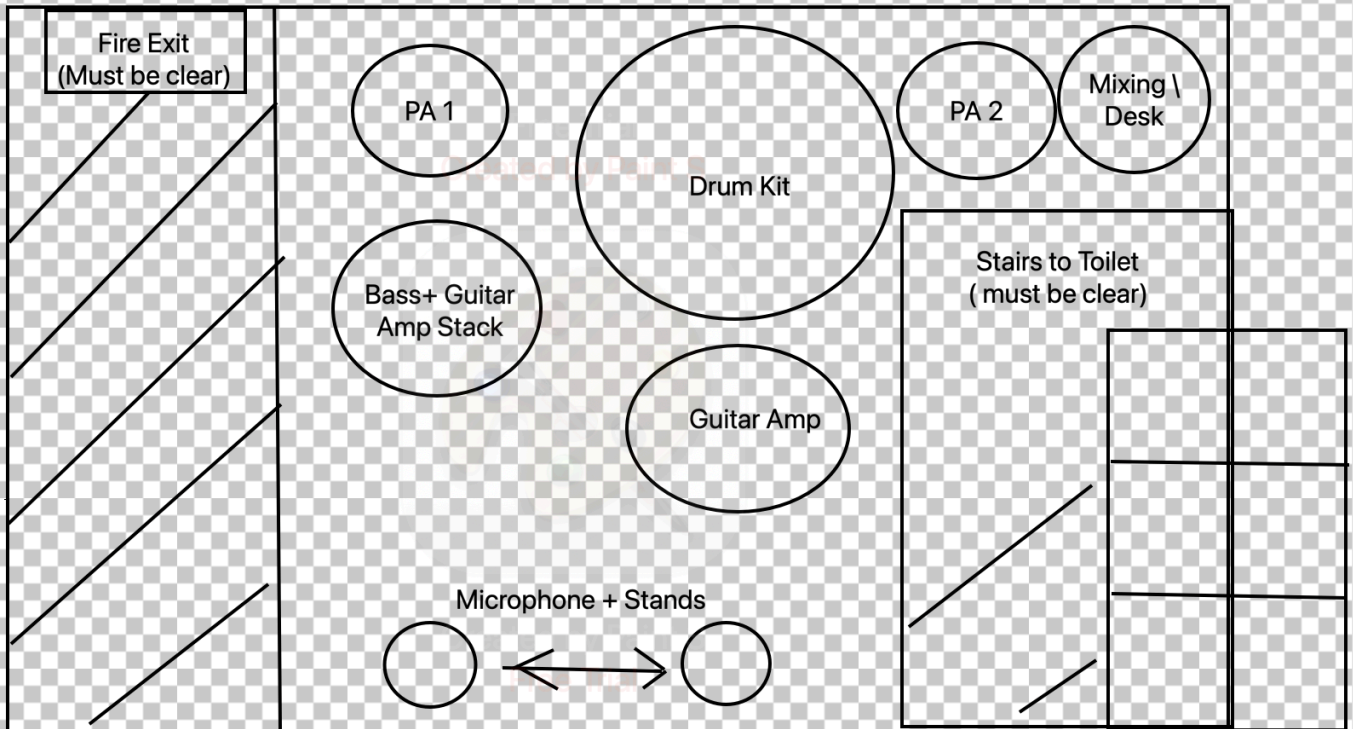
#### Line-up

- Drums
- Bass
- Guitar
- 1X Vocals
  
- Bringing
- Drum breakables
- Bass guitar
- 1 guitars
- Cables
  
- Need
- Drum kit (with 3 cymbal stands)
- Bass guitar amp
- X1 Guitar amps
- 1 mics
- 1 mic stand

#### **Em Tech Spec**

- Bringing
- cello
  
- Need
- 2X mics
- 2X mic stands

## Stage Plots



Same for all 4 bands. Em will only have 2 mics and a stool.

## Advanced Schedule

<b>GIG</b>	Wapentake LFD
<b>DATE</b>	13/03/26
<b>VENUE</b>	Wapentake
<b>VENUE ADDRESSES</b>	92 Kirkgate, Leeds, LS2 7DJ

### FOR ATTENTION OF:

NAME	ROLE	EMAIL	PHONE
Elliot Nichols	Tech Manager		079 506 312 87
Will Venn	General Manager		078 873 861 95
Oliver Washington	Sound Engineer	<a href="mailto:oliverwash@gmail.com">oliverwash@gmail.com</a>	7498308058

### KEY PERSONNEL/ARTIST REPRESENTATIVES:

PERSONNEL	NAME	EMAIL	PHONE
Promoters	Isla Hermiston	<a href="mailto:HER23085617@leedsconservatoire.ac.uk">HER23085617@leedsconservatoire.ac.uk</a>	
	Ted Green	<a href="mailto:GRE23085783@leedsconservatoire.ac.uk">GRE23085783@leedsconservatoire.ac.uk</a>	
	Christian Halford	<a href="mailto:HAL23084349@leedsconservatoire.ac.uk">HAL23084349@leedsconservatoire.ac.uk</a>	
	Sam Oyepitan	<a href="mailto:OYE22082673@leedsconservatoire.ac.uk">OYE22082673@leedsconservatoire.ac.uk</a>	

1st support	Em	N/A	+44 7966929751
2nd support	Elwell	N/A	+44 7522064644
3rd support	My son the monk	N/A	+44 7950630965
4th support	Moon and boy	N/A	+44 7387808481
Headliner	Pharmacie	<a href="mailto:pharmacields@gmail.com">pharmacields@gmail.com</a>	+44 7894813005

**PLEASE NOTE THE FOLLOWING. IF THERE ARE ANY PROBLEMS OR QUERIES PLEASE CONTACT**

**THE PROMOTIONS TEAM BEFORE THE EVENT IN ORDER TO DEAL WITH THEM PRIOR TO THE DAY.**

<b>LOAD IN</b>	
Headliner and all suport bands	<b>16:00 – 17:00</b>
<b>Soundcheck</b>	
Elwell	<b>17:00 - 17:20</b>
Pharmacie	<b>17:20 - 17:35</b>
My son the monk	<b>Line check</b>
Moon and Boy	<b>Line check</b>
Em	<b>17:35 – 17:55</b>
<b>DOORS</b>	<b>18:30</b>
Em	<b>19:00 – 19:20</b>
Moon and Boy	<b>19:35 - 20:00</b>
My Son the Monk	<b>20:15 - 20:45</b>
Pharmacie	<b>8:55 - 21:25</b>
Elwell	<b>21:35 - 22:05</b>
<b>CURFEW</b>	<b>22:30</b>

<b>PA</b>	All bands will be using the venues PA and Oli the sound engineer will be there to help all night.
<b>LIGHTS</b>	We will be using the venue's house lights - overhead lights and candles on tables
<b>POWER</b>	4x twin 13A sockets stage back. More around venue.
<b>PARKING</b>	There is no parking for the venue but there are carpark behind the venue and round the corner for £2.50 an hour and the bands will not need to load in as it is a short walk from the conservatoire.
<b>HOSPITALITY</b>	10% discount on drinks for anyone performing.
<b>SECURITY</b>	One member of staff on the door.
<b>CREW</b>	The bands will load in with help of the sound engineer and the promoters.
<b>STAGE</b>	Performance area is 11 by 12 feet an requires space to be cleared for the fire exit.

<b>BACKSTAGE</b>	N/A
<b>SET/RISERS</b>	Not using any risers due to limited stage space.
<b>DRESSING ROOMS</b>	N/A
<b>WATER</b>	Water available at bar all night
<b>BOX OFFICE REQUIREMENTS</b>	One promoter on box office.
<b>BACKLINE</b>	Mics, mic stands, PA and mixing console
<b>FIRE EXTINGUISHERS</b>	1 fire extinguisher in the venue next to the front entrance

## Costings

1		
2	<b>Wapentake LFD</b>	
3	Town	Leeds
4	Venue	Wapentake
5	Date	
6	Capacity	70
7	Holds	12
8	Offered on	58
9	Ticket Price	£5.00
10		
11	Potential Gross	£290.00
12		
13		
14	Venue	£- 0
15	PRS	£- 0
16	Box office staff	£- 0
17	Staff	£- 0
18	Tickets	£5.00
19	Ads National	£- 0
20	Ads Local	£- 0
21	Leaflets	£5.00
22	Posters	£5.00
23	Distribution	£- 0
24	Artwork	£15.00
25	Bands	£80.00
26	Crew	£- 0
27	P.A.	<i>In House</i>
28	Lights	<i>In House</i>
29	Catering	£- 0
30	Misc	£- 0
31		
32	<b>Total Costs</b>	<b>£110.00</b>
33	Balance	£180.00
34		
35	Breakeven point	<b>95</b>

Caption